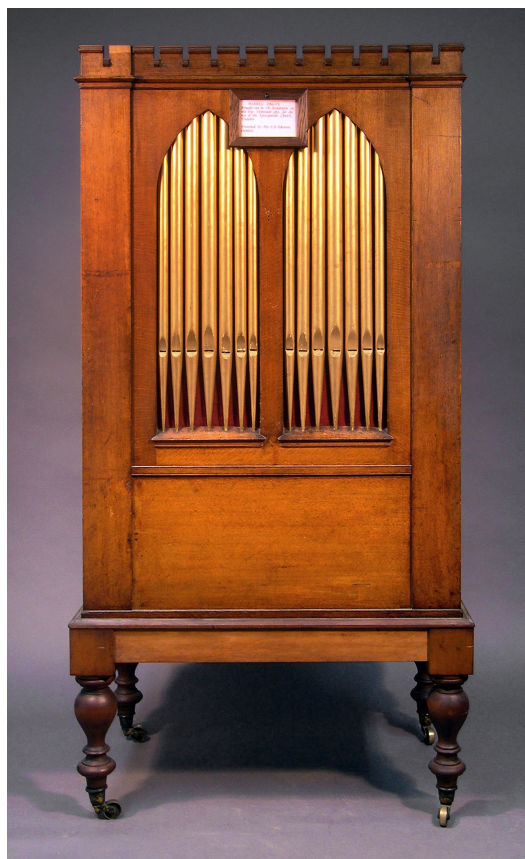


Te Toitu/Otago Settlers Museum

The Otago Early Settlers Hall and Museum was designed by John Burnside, and opened on the Diamond Anniversary of Otago - 23 March 1908. A supper room and kitchen was later added to the hall and then in 1922 the Donald Reid wing was built.¹ The Dunedin Public Art Gallery adjoining the Museum was purchased in 1927, and with two openings made in the curtain wall doubling the size of the Association's buildings.² In 1994 the art deco former bus depot of the New Zealand Railways Road Service (designed by James H. White in 1939), directly south of the Museum, was purchased and linked to the existing complex.³



TE TOITU / OTAGO SETTLERS MUSEUM – BRYCESON BARREL ORGAN
(COLLECTION OF TOITU OTAGO SETTLERS MUSEUM 2016)

Dr Richardson brought the barrel organ to Dunedin in April 1851. It was built by Henry Bryceson, of Tottenham Court, New Road, London and was in part the gift of a Mr George Freeman to St Paul's Church. It had three stops: a Diapason, Dulciana, and Principal, and played a barrel of 10 tunes. This was the second barrel organ in Otago, the first being recorded in 1840.⁴ The Bryceson organ was used in the former courthouse and the leased house until early 1858, when it was sold to Edward Bland Atkinson of Clifton Falls Station, Kakanui, North Otago. The organ was used at the homestead for various services, Anglican, Presbyterian, and Methodist. In 1903, the secretary of the Otago Early Settlers Association secured the donation of the instrument from Mrs E. B. Atkinson.⁵

- 1 Brosnahan, Seán G., *To Fame Undying; the Otago Settlers Association 1898 - 2008* (Dunedin: Otago Settlers Association, 2008), p.25
- 2 Ibid., p.45
- 3 Ibid, p.92
- 4 See St. Paul's Anglican Cathedral, Dunedin – note 13
- 5 *Papers Past - Otago Witness*, 4 October 1851, p.2; Ibid., 14 February 1852, p.1